



## HeLa+Yeast 酶解肽段分析

AN0116

**色谱柱:** Aurora C18, 1.6 $\mu$ m, 75  $\mu$ m x 250 mm

**规格:** 250 x 0.075 mm ID

**货号:** AUR2-25075C18A-CSI

**洗脱方式:** Gradient

**流动相A:** 0.1 vol% formic acid in water

**流动相B:** 0.1 vol% formic acid in ACN

**流动相:**

Time (mins)	0.0	90.0	100.0	110.0	111.0	120.0
%B	2	25	35	80	2	2

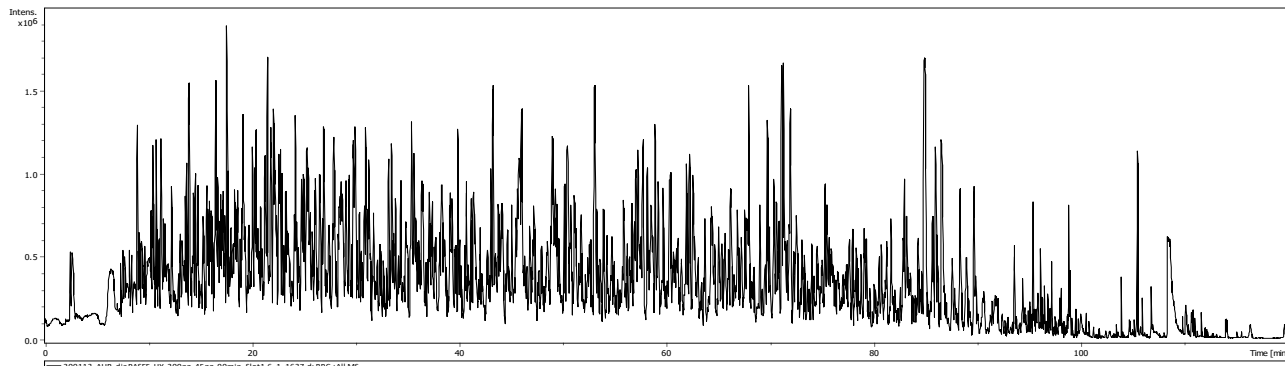
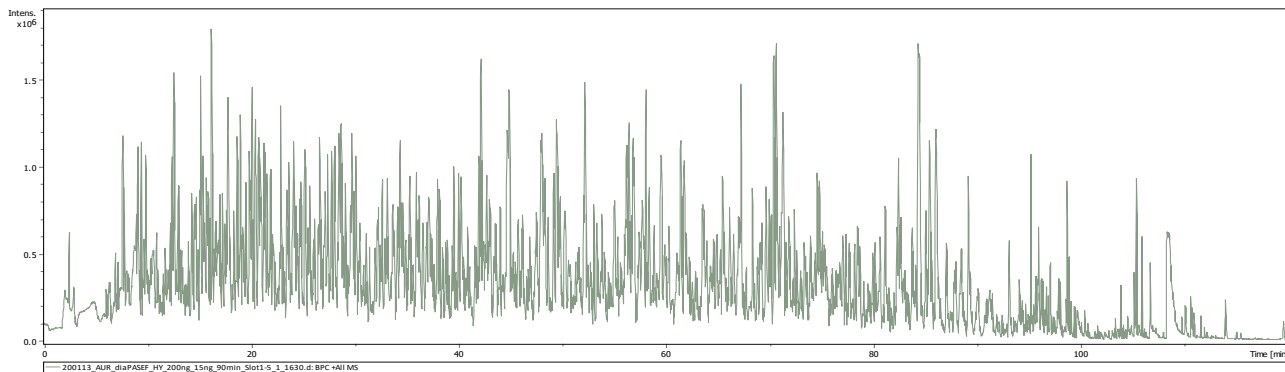
**流速:** 400nL/min

**柱温:** 60°C

**进样量:** 200ng+15ng(hela, yeast), 200ng+45ng(hela, yeast)

**液相系统:** nanoElute (Bruker)

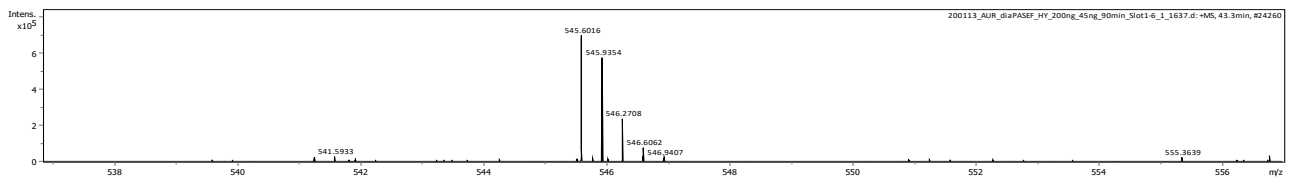
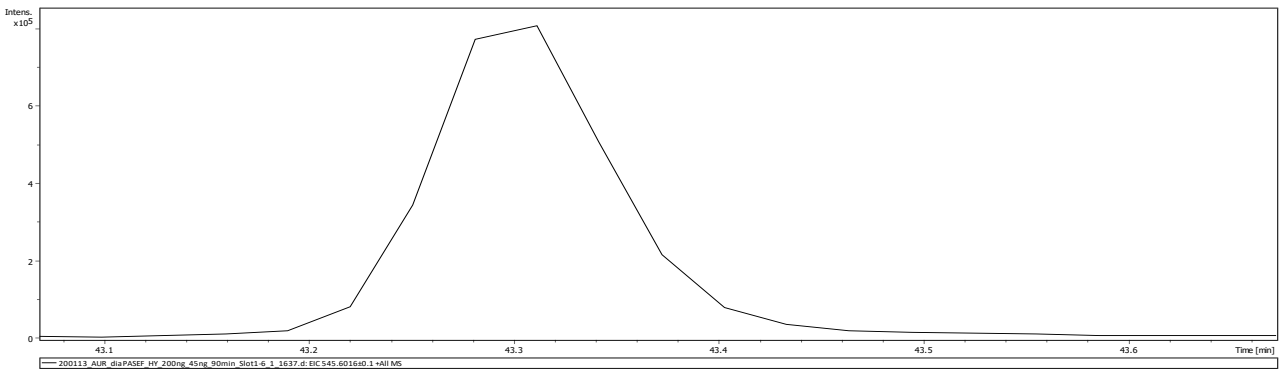
**质谱:** timsTOF Pro (Bruker)





## HeLa+Yeast 酶解肽段分析

AN0115



**Note:**

Sample A, protein group identified: 7,697 human and 1,394 yeast  
Sample B, protein group identified: 7,943 human and 2,250 yeast